

RVS ECS Screening Process

RVS Kindergarten “PLAI” Approach...



Programming for Learning And Instruction

Screening

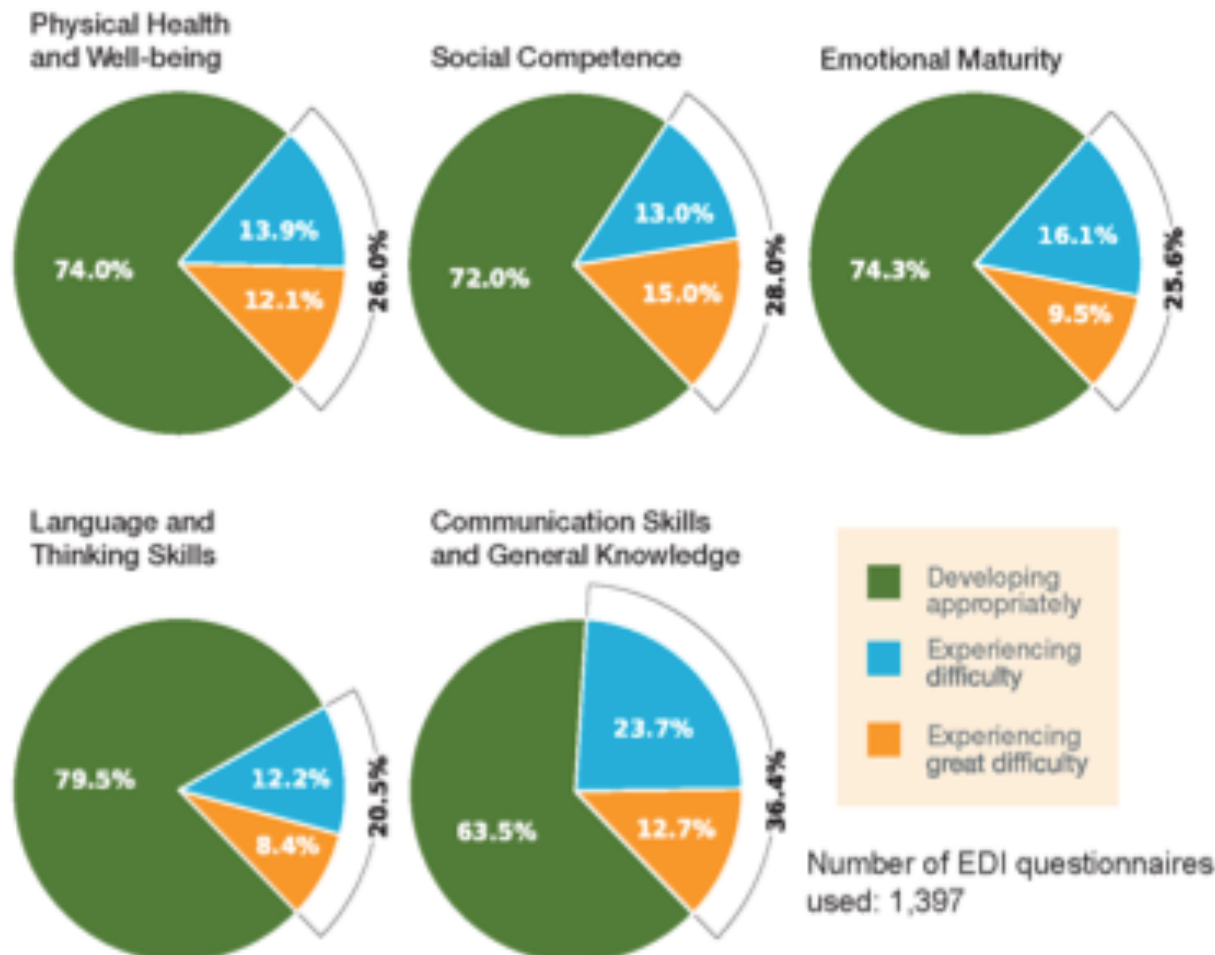
- 💧 PEDS – sent home to all parents
- 💧 Brigance – completed when concerns are identified

RVS EMap Results

- ◆ RVS has three areas of results:
 - ◆ North Rocky View
 - ◆ Cochrane
 - ◆ Southeast Rocky View

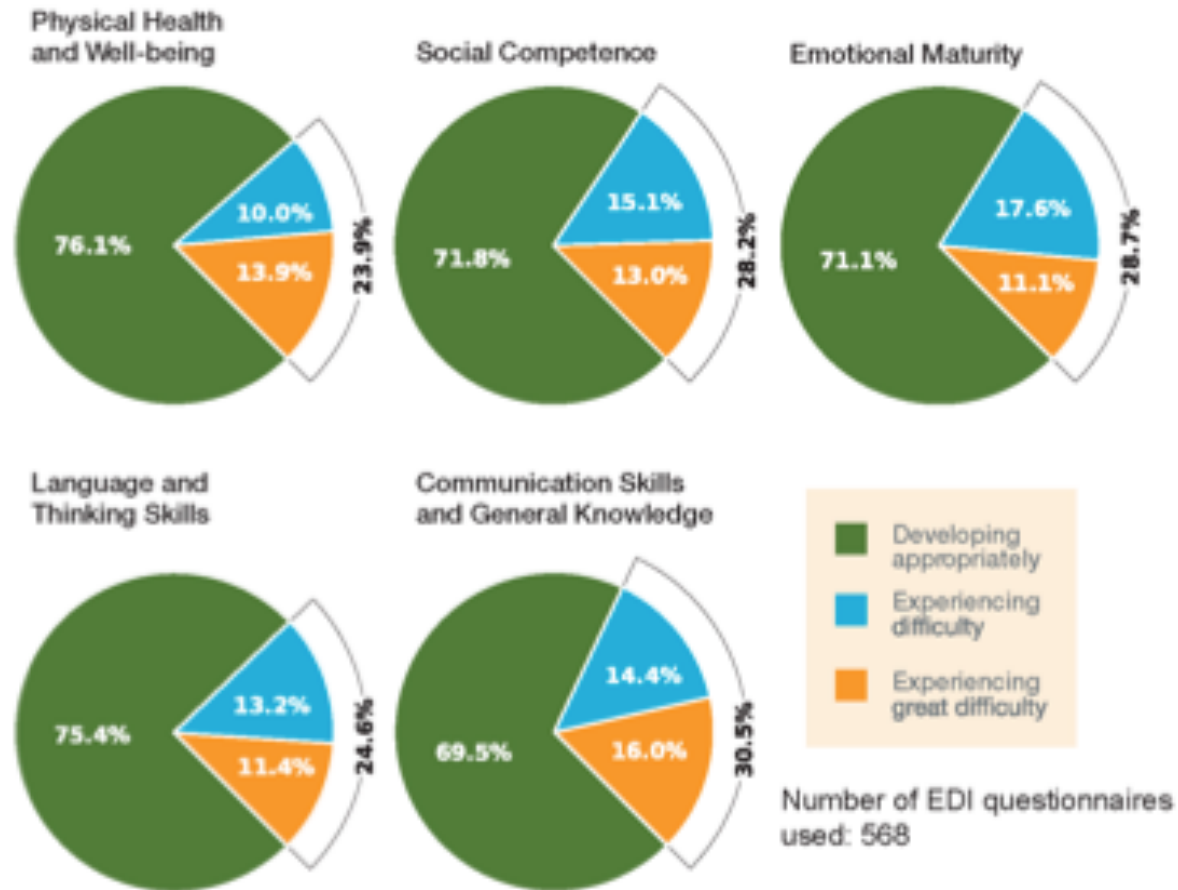
North Rocky View

Early Development Instrument (EDI) baseline results



Cochrane & Area

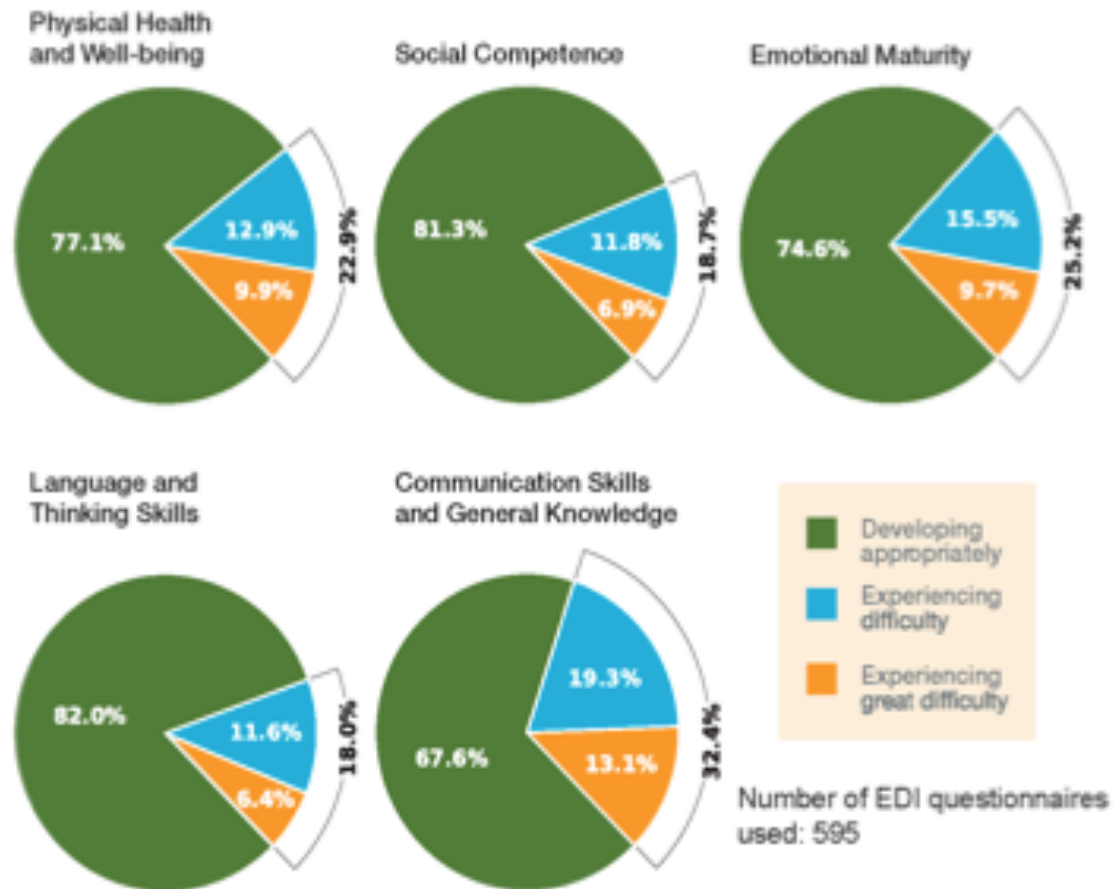
Early Development Instrument (EDI) baseline results



Source: Early Child Development Mapping Project (ECMap), April 2014

Chestermere – Southeast Rocky View

Early Development Instrument (EDI) baseline results



Source: Early Child Development Mapping Project (ECMap), April 2014

CLIC – Capturing Learning in the Classroom



- CLIC is a tool that supports teachers in:
 - Capturing their observations of children at play
 - Connecting those observations to learning stories and curriculum outcomes
 - Generating reports that will support planning and communication of learning
 - Organizing and tracking the children they have observed as well as the subject areas
 - Sharing the learning stories and progress with individual parents showing how the curriculum outcomes are being met through play

RVS & Pearson Canada

- ◆ A partnership was created during the 2013-14 school year to test with Pearson in western Canada
 - ◆ Community of Practice with all of the kindergarten teachers from 4 school sites
 - ◆ Pearson representation at a majority of the days we met
 - ◆ Feedback from our teachers was used in creating the next generation of CLIC that was just recently released
 - ◆ Consultation regarding Pedagogical Documentation Professional Learning

