

2026 – 2029 CAPITAL PLAN



Table of Contents

Capital Plan Overview ----- 3

RVS At-a-Glance ----- 4

 Our Division ----- 4

 Our Schools ----- 5

 Population and Growth ----- 8

 Capacity and Utilization ----- 8

Modular Classrooms ----- 9

Geographical Challenges ----- 11

Priorities ----- 12

Capital Priorities List ----- 12

Recently Approved Capital Projects ----- 13

Airdrie At-a-Glance ----- 14

 Priority 3: Middle School (Grades 7 – 9) – Cobblestone Creek ----- 16

 Priority 6: Kindergarten – Grade 9 School – Wildflower/Vantage Rise ----- 18

Cochrane At-a-Glance ----- 20

 Priority 1: High School (Grades 9 –12) – Horse Creek Sports Park ----- 22

 Priority 2: Kindergarten – Grade 8 School – Heartland ----- 24

Chestermere At-a-Glance ----- 27

 Priority 4: Kindergarten – Grade 9 School – Clearwater Park ----- 29

Rural Areas At-a-Glance ----- 32

 Priority 5: Kindergarten – Grade 8 School – Vista Crossing ----- 34

 Priority 7: Springbank Middle School – Modernization and Addition ----- 36

Rocky View Schools requires ongoing approval for additional new schools in our rapidly growing communities each year just to catch up with our enrolment growth over the last decade.

Summary

Rocky View Schools (RVS) is committed to delivering on its vision of being a world-class learning organization where all 29,200+ students achieve their absolute best. Increasing enrolment in our schools serving three of Alberta's fastest-growing communities with populations over 10,000 – Airdrie, Cochrane and Chestermere – is putting pressure on our students, staff and school buildings.

Despite government approval of funding for four new Kindergarten – Grade 8/9 schools in Airdrie, Cochrane and Chestermere and a new high school in Airdrie in Budget 2024, rising utilization of most RVS schools will push schools in those communities to 97 per cent, 88 per cent and 98 per cent average utilization respectively in 2028, when those new schools are expected to open.

RVS is years behind in government approval and funding for new schools, additions and modular classrooms to accommodate our fast-growing communities. We look forward to working with government to get new schools approved, built and open as quickly as possible.

RVS At-a-Glance

Our Division



Vision

Rocky View Schools is a world-class learning organization where all students achieve their absolute best.

Purpose

Rocky View Schools connects with all students to ensure everyone learns, belongs and succeeds.

Our Schools

As of September 2024, the regular school buildings within RVS boundaries include:

- 20 core schools have been built since 1990, located in the major growth centres of Cochrane, Airdrie, Chestermere and Langdon. Two of these were replacement schools.
- Five public-private partnership (P3) schools were constructed between 2012 and 2024.
- 11 core schools were built in the 1970s and 1980s. These are in their original condition with varying degrees of upgrades, such as additions and minor modernizations.
- Eight schools in the division were built before 1970.
- Since 2019, RVS has grown by 4,303 students, the equivalent of six schools.
- 415 portable or modular classrooms dating from 1979 to the present provide much-needed space but are not a permanent solution.

Upcoming Approved Facilities:

- **Bow Valley High School expansion/modernization: announced March 4, 2022.**
Construction began in the spring of 2024. This project will be a phased construction and along with the modular classrooms approved for the site will add about 500 student spaces. The completion of all phases is expected to be ready for the start of the 2026/27 school year.



Construction to expand and modernize Bow Valley High School in Cochrane began in the spring of 2024.

Five-year Enrolment Growth Across RVS

	2020*	2021	2022	2023	2024
Kindergarten	1,456	1,832	1,756	1,795	1,687
Grade 1	1,893	1,933	2,130	2,024	2,074
Grade 2	1,954	2,005	2,000	2,217	2,128
Grade 3	2,017	2,021	2,113	2,117	2,314
Grade 4	2,035	2,091	2,119	2,178	2,177
Grade 5	1,962	2,072	2,180	2,206	2,239
Grade 6	2,093	2,037	2,199	2,285	2,285
Summary	13,410	13,991	14,497	14,822	14,904
Grade 7	2,117	2,086	2,136	2,234	2,326
Grade 8	1,986	2,105	2,151	2,142	2,297
Grade 9	1,953	2,073	2,276	2,257	2,253
Summary	6,056	6,264	6,563	6,633	6,876
Grade 10	1,764	1,921	2,107	2,275	2,269
Grade 11	1,675	1,704	1,926	2,088	2,236
Grade 12	1,638	1,612	1,692	1,925	2,070
Summary	5,077	5,237	5,725	6,288	6,575
Total	24,543**	25,492**	26,785**	27,743**	28,355**
<i>Year-to-Year Growth</i>	-1.92% 480*	3.87% 949	5.07% 1,293	3.58% 958	2.21% 612

*Numbers declined due to COVID-19 pandemic.

**Numbers do not include pre-Kindergarten enrolments, online schools, colony schools or the RVS Community Learning Centre.

Five-year Enrolment Growth by Community

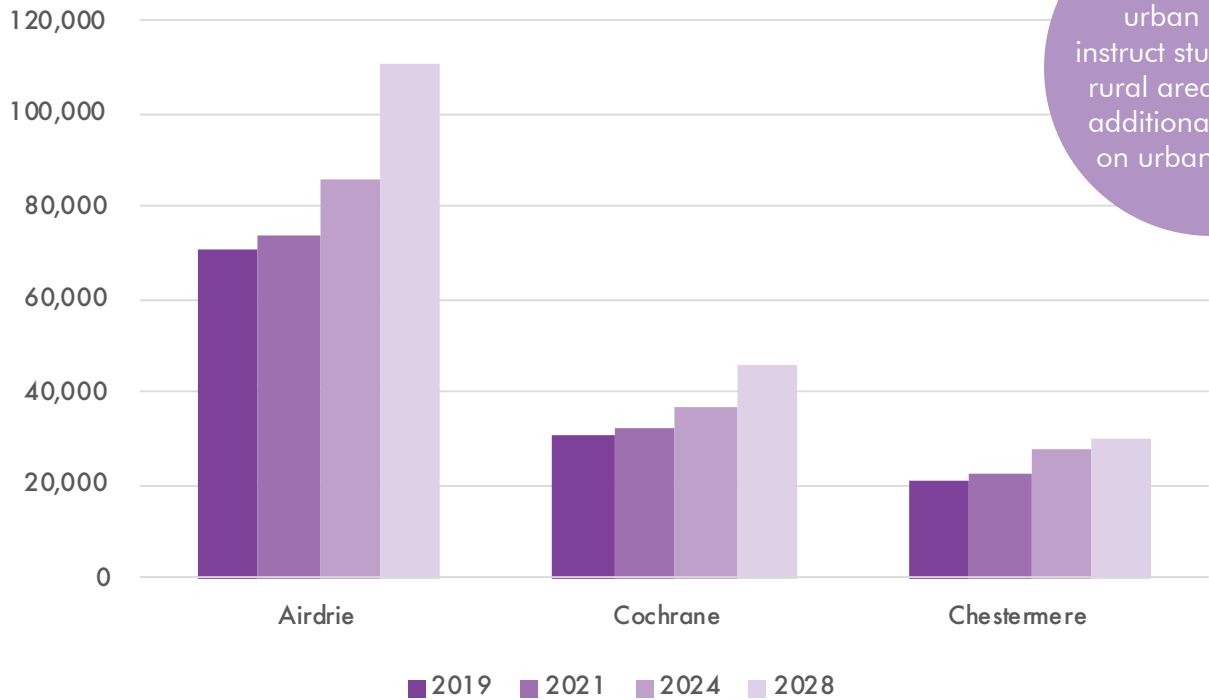
The following table shows the growth in the different areas of RVS over the past five years. RVS added more than 400 students in 2024 in the three major municipalities of Airdrie, Cochrane and Chestermere alone.

	2020*	2021	2022	2023	2024	2025 Projected
Airdrie	11,101	11,566	12,405	12,904	13,262	13,548 (2.2%)
<i>Difference</i>	26	465	839	499	358	286
Cochrane	5,003	5,311	5,612	5,855	5,956	5,989 (0.1%)
<i>Difference</i>	-26	308	301	243	101	33
Chestermere	3,700	3,760	3,822	4,005	3,948	3,935 (-0.01%)
<i>Difference</i>	-165	60	62	183	-57	-13
Springbank	1,733	1,770	1,808	1,813	1,793	1,751 (-2.4%)
<i>Difference</i>	-9	37	38	5	-20	-42
Crossfield	661	668	704	711	725	724 (-0.01%)
<i>Difference</i>	-8	7	36	7	14	-1

*Numbers declined due to COVID-19 pandemic.

Population and Growth

RVS' three urban centres instruct students from rural areas, putting additional pressure on urban schools.



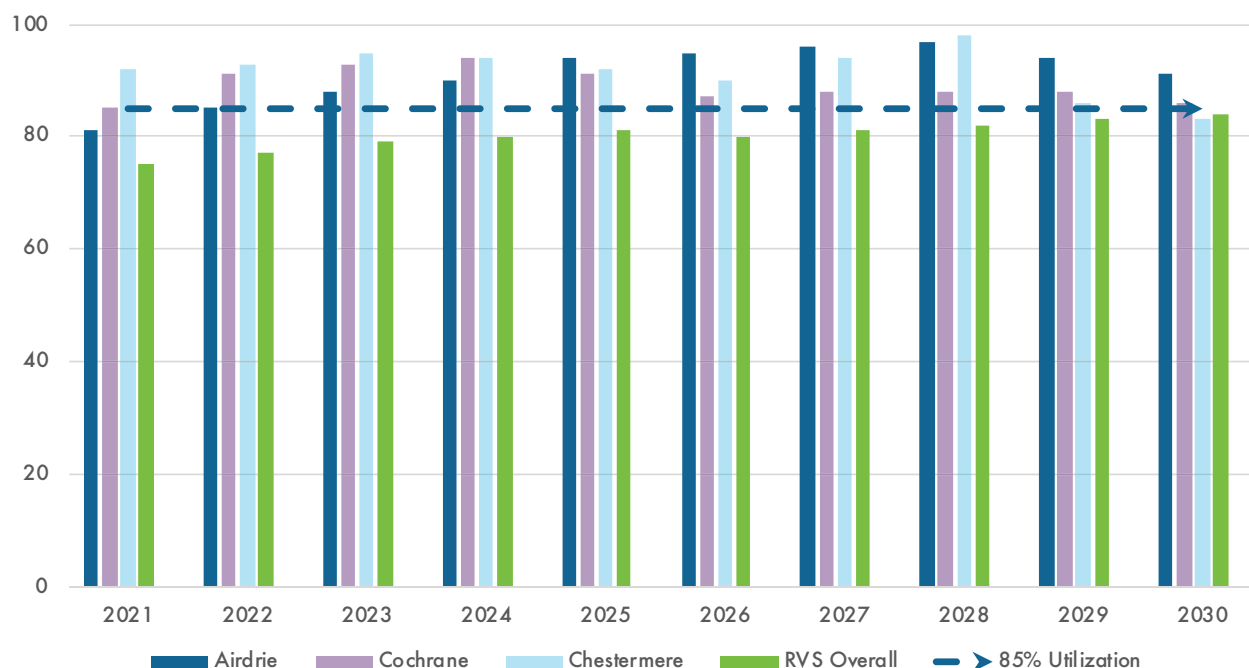
	Airdrie	Cochrane	Chestermere
2019	70,564	31,189	20,732
2021	74,100	32,199	22,163
2024	85,800	37,011	28,129
2028*	111,111	46,018	30,422

*Projected population growth from municipal census and reports.

Capacity and Utilization

- Airdrie’s utilization rate will increase from 94 to 97 per cent by September 2028 before declining to 91 per cent once the two new K – 9 schools open in 2027 and 2028. Utilization continues to rise in 2029 to 94 per cent before reducing to 88 per cent in 2030 with the addition of the new high school in Airdrie.
- Cochrane’s utilization rate continues to grow but the addition of a K – 8 school in the Rivercrest community in 2028 will help ensure school utilization in the community remains at a reasonable level. The schools in town will see an overall decline from 93 per cent to 88 per cent with this additional school.
- Utilization in Chestermere will continue to see growth from 94 per cent in 2024 to 98 per cent in 2028. The addition of a new K – 9 school in Dawson’s Landing will assist in bringing this percentage down to 83 per cent overall utilization if the new school opens in September 2028.

Rocky View Schools Growth Chart – 2021-2030



Modular Classrooms

Modular classrooms have long been used as added space for schools. Provincial funding, through Alberta Education’s Annual Modular Classroom Program, is provided for the addition of new or the relocation of existing modular classrooms to ease enrolment pressures in communities where school divisions are experiencing high student enrolment growth.

Alberta Education requires school divisions across the province review their accommodation needs annually to determine the demand for additional modular classrooms. RVS submitted a request on Nov. 1, 2024, for 27 new modular units and one existing washroom unit relocation; 19 will be distributed throughout the division and eight are replacements for aging units.

Modular classrooms are an important part of strategic facility planning in RVS, as one-third of RVS’ capacity is modular classrooms. As seen in the table on the following page, 411 of RVS’ classrooms are modular, meaning about 36 per cent or 10,375 students learn in a modular classroom.

**68
per cent
of RVS’ schools
are currently at
maximum modular
capacity on their school
sites, and RVS cannot
put much needed
additional modular
units on these
schools.**

Location of RVS' Modular Classrooms

School	Modulars	School	Modulars
A.E. Bowers Elementary School	13	Indus School	4
Banded Peak School	4	Kathyrn School	2
Beiseker Community School	2	Manachaban Middle School	10
Bert Church High School	8	Meadowbrook School	8
Bow Valley High School	10	Mitford School	12
Chestermere High School	6	Muriel Clayton Middle School	10
Chestermere Lake Middle School	12	Northcott Prairie School	11
Cochrane Christian Academy	8	Nose Creek Elementary School	14
Cochrane High School	12	Prairie Waters Elementary School	8
Cooper's Crossing School	12	Rainbow Creek Elementary School	16
Crossfield Elementary School	8	Ralph McCall School	14
C.W. Perry School	16	RancheView School	15
École Edwards Elementary School	8	R.J. Hawkey Elementary School	10
East Lake School	16	Sarah Thompson School	12
Elbow Valley Elementary School	12	Springbank Community High School	10
Elizabeth Barrett Elementary School	12	Springbank Middle School	6
Fireside School	13	Westbrook School	10
George McDougall High School	10	W.G. Murdoch School	6
Glenbow Elementary School	14	Windsong Heights School	11
Heloise Lorimer School	10	W.H. Croxford High School	8
Hérons Crossing School	12	Total:	415*

* Total assumes all current modular classroom approvals are in place for school use by July 2025.

41 of 44 RVS school buildings have modular classrooms (online schools, colony schools and the RVS Community Learning Centre excluded).

Modular classrooms are approved to alleviate short- to medium-term growth pressures; however, in many scenarios, RVS must use these as permanent structures over the long term as there have been limited opportunities to remove and relocate these units from these schools. Many of these schools were never designed or planned to have multiple modular classrooms and RVS is quickly running out of available space to add more.

Ideally, modulares are connected to the core school building. RVS has 26 modular classrooms that are standalone and completely detached from the school core, creating separation for those students from the main school, requiring them to walk outside in all seasons and weather to use washroom facilities and change classes.

While modular classrooms can relieve classroom space pressures, they do not provide additional gymnasiums, cafeterias, learning commons, science labs or specialty shop spaces that are needed in addition to traditional classrooms.

There are other factors to consider when adding modulares such as current building code standards, site constraints such as firefighting provisions, allowable site coverage, parking stall counts, access for delivery and placement, along with other additional cost considerations such as interior corridors, firewalls and washroom facilities to add.

Geographical Challenges

RVS serves more than 4,500 square kilometers of land and has schools west of Highway 22 in Bragg Creek, as far east as Highway 9 and 797, north to Crossfield and south to Highway 22X. By vehicle, numerous schools can be at least one hour apart.

The Calgary-Edmonton Corridor zone is one of Canada's biggest urban areas and the division encompasses a portion of this in the south. The 2021 Canada census had more than 3,200,000 people residing in the 38,300 square kilometer zone. The area includes Chestermere, Airdrie, Cochrane and Rocky View County. Except

for Bragg Creek, RVS' division boundary is greatly influenced by the proximity to major municipalities and the opportunity for migration and immigration to surrounding communities.

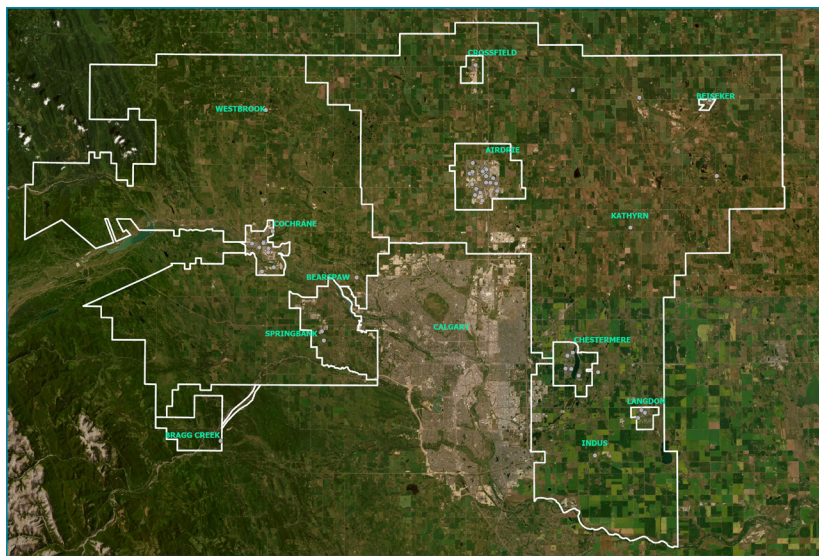
RVS, like many Alberta school divisions, is encountering challenges to secure sufficient drivers and buses at the current required service levels. The present RVS student population growth rate generates a demand for five to 10 new bus routes per year.

We currently transport 44 per cent of our student population. By contrast, the Calgary Board of Education (CBE) currently transports about 16 per cent of its student body.

School of choice or special programs can significantly contribute to long duration

routes. For instance, Bragg Creek area residents seeking French Immersion must be transported up to 70 minutes one-way to Springbank schools, instead of a 20-minute ride to Banded Peak School.

Some Rocky View County roads are not as well maintained as the metropolitan thoroughfares. Road accessibility is, therefore, affected seasonally and buses assigned to these routes have higher maintenance costs.



Capital Priorities

The following pages outline RVS' Capital Priorities for the Government of Alberta's budget years 2026, 2027 and 2028. Detailed information for each community and request, beginning with Airdrie and ending with rural county schools, is provided after the overall capital priority list.

Capital Priority List

2026 Budget Request	Capital Project	Build Out Capacity	Community	Project Classification	Site Readiness Status
1	Cochrane 9 – 12	1,525	Horse Creek	New School	Fall 2025
2	Cochrane K – 8	950	Heartland	New School	Ready
3	Airdrie 7 – 9	1,045	Cobblestone Creek	New School	Spring 2026
2027 Budget Request	Capital Project	Build Out Capacity	Community	Project Classification	Site Readiness Status
4	Chestermere K – 9	815	Clearwater Park	New School	2026
5	Crossfield K – 8	680	Vista Crossing	New School	2026
2028 Budget Request	Capital Project	Build Out Capacity	Community	Project Classification	Site Readiness Status
6	Airdrie K – 9	905	Wildflower/ Vantage Rise	New School	TBD
7	Springbank Middle	280	Springbank	Addition	Ready

RVS is continuing to work with developers, Alberta Government departments and municipalities to ensure these sites are 100 per cent site-ready at the time of approval. Sites may have a temporary loam pile on them at the time of report but can be removed by the developer following project approval for construction.

Recently Approved Capital Projects

The provincial government announced funding for five highly anticipated RVS schools in Budget 2024 and as part of the government's School Accelerator Program:

- Full construction funding for an Airdrie Kindergarten – Grade 9 (K – 9) school (South Windsong)
 - * Design work is complete with RVS awaiting further information on the selected P3 contract award. Construction is expected to begin in the spring of 2025.
- Full construction funding for an Airdrie K – 9 school (Bayview)
- Full construction funding for a Cochrane K – 8 school (Rivercrest)
 - * Design is underway for these two school projects with RVS awaiting information regarding the development permit submission which is scheduled for spring of 2025. Procurement for the P3 proponent will start after this step and construction is expected to begin in the spring of 2026.
- Full construction funding for an Airdrie high school (Southwinds)
 - * Design is underway with RVS awaiting information regarding the development permit submission which is scheduled for summer of 2025. Procurement for the P3 proponent will start after this step. The construction timeline is to be determined.
- Full construction funding for a Chestermere K – 9 school (Dawson's Landing)
 - * Design is underway with RVS awaiting information regarding the development permit submission to the municipality which is scheduled for spring of 2025. Procurement for the P3 proponent will start after this step. The construction timeline is to be determined.

Approved in Budget 2025

- Planning funding for an Airdrie K – 9 school (Lanark)
- Planning funding for a Chestermere high school (Chelsea)

Capital Project	Build Out Capacity	Community	Project Classification
Airdrie K – 9	905	South Windsong	New School
Airdrie K – 9	905	Bayview	New School
Cochrane K – 8	905	Rivercrest	New School
Chestermere K – 9	905	Dawson's Landing	New School
Airdrie 10 – 12	1,810	Southwinds	New School
Airdrie K – 9	950	Lanark	New School
Chestermere 10 – 12	950	Chelsea	New School

Airdrie At-a-Glance

According to Airdrie’s municipal census, the city’s population was more than 85,800 as of July 1, 2024, a 6.39 per cent growth rate since the 2023 census. The City of Airdrie’s annual growth report study indicates the population will increase by 29.5 per cent from 2024 - 2028. The City’s administration is forecasting a 5.68 per cent average annual year-over-year growth rate – approximately 4,600 additional people per year – with a population of approximately 113,400 by 2029.



The City of Airdrie expects an additional 600+ acres in new or expanding neighbourhoods will have land use and detailed servicing plans approved by the end of 2024, enabling construction to begin in 2025. This illustrates how quickly the City is approving development in this growing city.

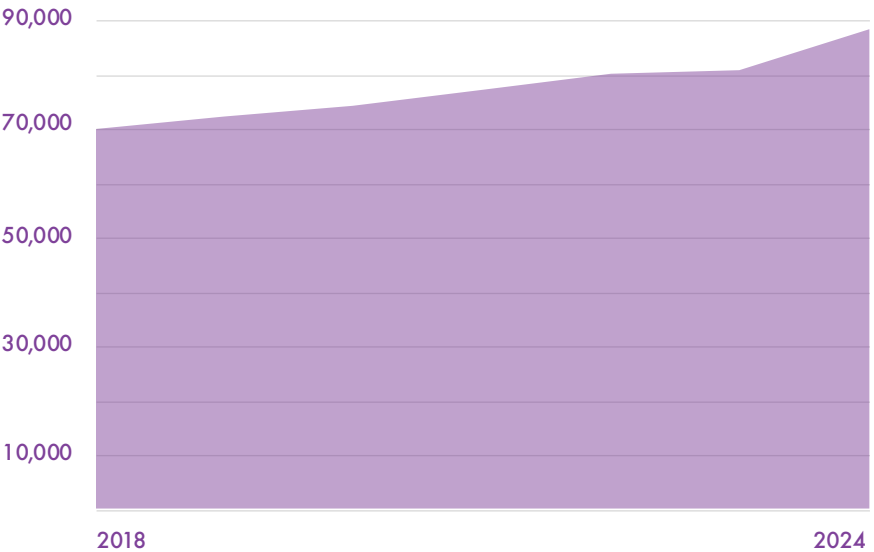
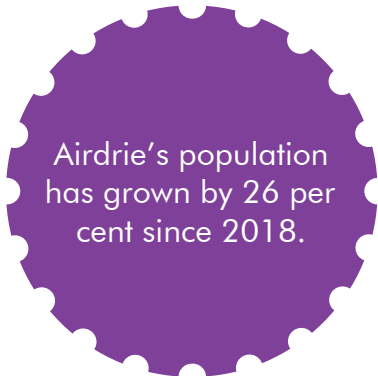
School buildings in Airdrie reflect this rapid growth. RVS has 17 schools in Airdrie; of these, 16 have modular classrooms attached or freestanding with twelve schools having 10 or more modulares.

RVS has not opened a new school in Airdrie since Northcott Prairie School in 2019. RVS will have increased by 2,180 K – 8 students by the time a new school could be opened in 2027.

City of Airdrie administration has made RVS aware they are committed to supporting all school boards and the Province by providing up-to-the-month data for any information included within Airdrie’s 2024 Growth Report and any additional information that may help the provincial government understand the needs in the area. With the municipality on board, RVS also needs the provincial government’s support.

Balancing Airdrie Student Spaces

After a robust [public engagement](#) process, the Board approved many grade configuration changes and attendance boundary changes to address increasing enrolment pressures and improve utilizations at Airdrie schools. These broad changes will be made across Airdrie for September 2025. With no new schools set to open in Airdrie until at least 2027, RVS had no alternative but to move ahead with changing the grade configurations and attendance boundaries of most of Airdrie’s schools, impacting many families in the city.



Student Enrolment and Projections

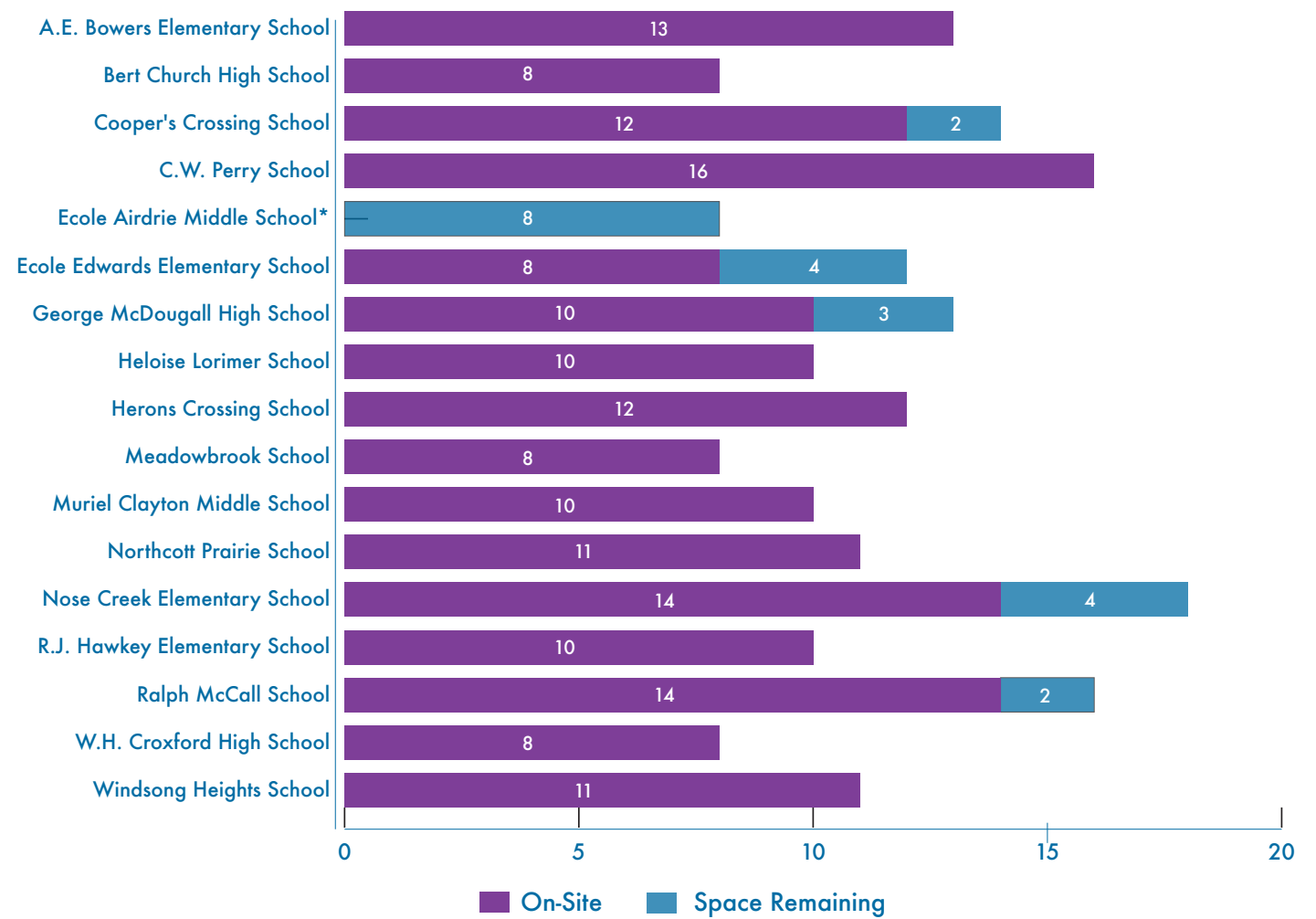
The table below is the 2024 RVS student population in Airdrie. RVS’ Airdrie student enrolments increase annually by approximately 2.7 per cent by grade.

Grade	K	1	2	3	4	5	6	7	8	9	10	11	12
Enrolment	795	977	1,028	1,061	1,001	1,040	1,036	1,057	1,043	1,076	1,104	1,085	939

From 2020 to 2024, RVS’ student population in Airdrie increased by about 525 students each year. RVS’ student population in 2020 was 11,101 with an 86 per cent utilization rate. In September 2024, this had increased to an enrolment of 13,262 students and a 97 per cent utilization rate. RVS schools in Airdrie currently have space for 13,817 students, leaving 555 quickly decreasing student spaces spread across Airdrie’s 17 schools. Student spaces will rise to 15,627 in September 2028, when the newly approved K – 8 schools in South Windsong and Bayview are both expected to be open.

RVS staff have worked hard to intensify existing space, and the Board has [advocated](#) strongly for full construction funding and modular classroom approval from the provincial government. Unfortunately, school approvals have not kept pace with RVS’ growth in Airdrie.

Current Airdrie Modular Unit Capacity



*While eight modular classrooms can be accommodated on the school site, it would come at the expense of outdoor playing field space.

Priority 3: Middle School (Grades 7 – 9)

Cobblestone Creek, Airdrie

New School Information

Planned for the southwest quadrant of Airdrie, a dedicated middle school is needed to balance the enrolment levels between the elementary and high school grade structures. Currently in Airdrie, RVS has four dedicated middle schools, Meadowbrook, École Airdrie Middle School, Muriel Clayton Middle School and C.W. Perry School, plus three K – 9 schools: Herons Crossing School, Windsong Heights School and Northcott Prairie School.

RVS is requesting a 1,045-capacity middle school upon completion of construction. This would result in 21 classrooms, a 1,060-square meter gymnasium, multiple options and space for Career and Technology Foundation (CTF) courses, modern ancillary spaces and a functional learning commons.

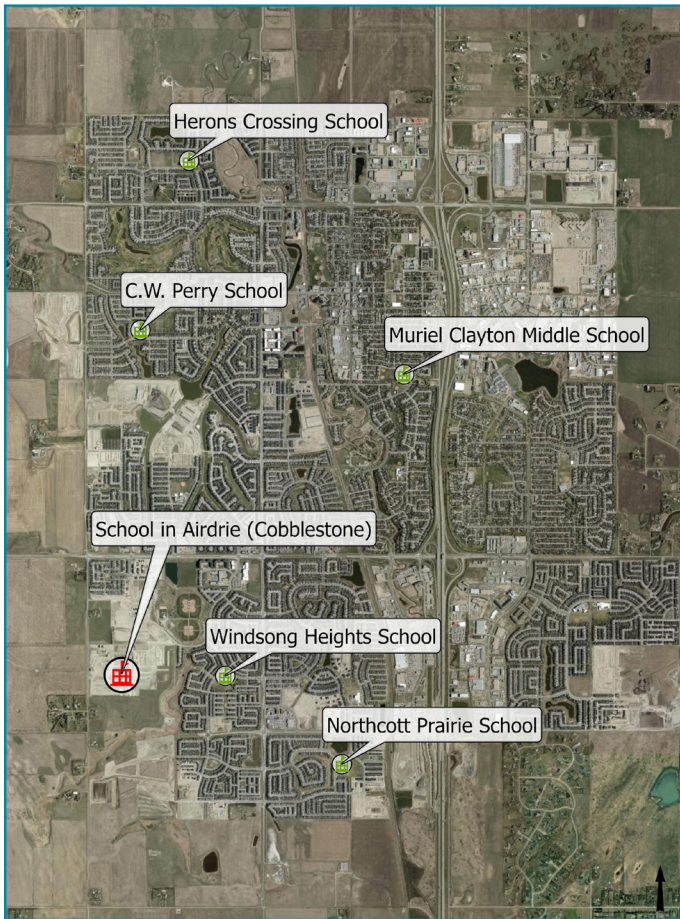
Impacted Schools

This critical planning alleviates future challenges and enrolment concerns for multiple locations throughout Airdrie. With C.W. Perry School being in Sagewood, it has the three communities of Wildflower, Key Ranch and Vantage Rise in direct vicinity of the current school with the Canals and Midtown nearby. Muriel Clayton Middle School, located in Airdrie Meadows, is in one of Airdrie's older neighborhoods with homes being constructed between 1960 and 1980; however, RVS continues to see enrolment requests and growth in this area as demographics evolve. Williamstown and Reunion continue to show high enrolments at Herons Crossing School. Windsong Heights School and Northcott Prairie School see continued growth from the developing neighbourhoods of South Windsong, Southwinds and South Point.

Airdrie West Middle Schools

Year Actuals (A) Projected (P)	C.W. Perry School 6 – 9 Current Capacity 984	Herons Crossing School K – 9 Current Capacity 949	Muriel Clayton Middle School 6 – 9 Current Capacity 730	Northcott Prairie School K – 9 Current Capacity 979	Wingsong Heights School K – 9 Current Capacity 888	Enrolment Capacity 4,530	Approximate Utilization Rate
2021 (A)	562 (73%)	872 (89%)	628 (86%)	743 (72%)	821 (87%)	3,626	80%
2022 (A)	524 (68%)	914 (94%)	673 (92%)	888 (87%)	856 (92%)	3,855	85%
2023 (A)	530 (69%)	901 (93%)	691 (95%)	954 (93%)	864 (94%)	3,940	87%
2024 (A)	559 (72%)	897 (94%)	719 (98%)	1,062 (104%)	849 (92%)	4,086	90%
2025 (P)	909 (92%)	949 (97%)	737 (101%)	971 (95%)	924 (101%)	4,490	99%
2026 (P)	1,042 (106%)	922 (94%)	704 (96%)	977 (95%)	916 (100%)	4,561	101%
2027 (P)	1,136 (115%)	936 (95%)	692 (95%)	1,037 (101%)	673 (74%)	4,474	99%
2028 (P)	1,269 (129%)	960 (97%)	678 (93%)	1,136 (111%)	641 (70%)	4,684	103%
2029 (P)	1,427 (145%)	975 (98%)	672 (92%)	1,227 (120%)	611 (67%)	4,912	108%

Calculations are made with Kindergarten considered a full-time equivalent (FTE).



Need

If approved, the soonest opening date for this school would be 2030. RVS will continue to work with developers and the City of Airdrie to advance the Cobblestone Creek site in southwest Airdrie to accommodate this pre-planned middle school for future divisional growth.

This new Airdrie school would result in 5,575 total spaces being available in this area and reduce the approximate utilization rate to 91 per cent for 2030. With a projected enrolment in this area of 5,081 students for 2030, this new middle school is integral to RVS' continued delivery of a quality learning experience. Without support for this school, RVS is expecting occupancy to reach 112 per cent at the existing schools.

Challenge

While the five schools offering Grades 7 – 9 on the west side of Airdrie seem adequate, RVS' middle school grade spaces are becoming extremely limited.

There is no opportunity to bus students across the highway to Meadowbrook School with that school's current utilization at 96 per cent, nor are there any middle schools with capacity outside of Airdrie,

regardless of extended transportation and busing times. Planning for another middle school has the advantage of reducing capacity at five schools within Airdrie and aligns with RVS' long-term goals. All five schools have reached their maximum allotted coverage with core school space and modular unit capacity.

Solution

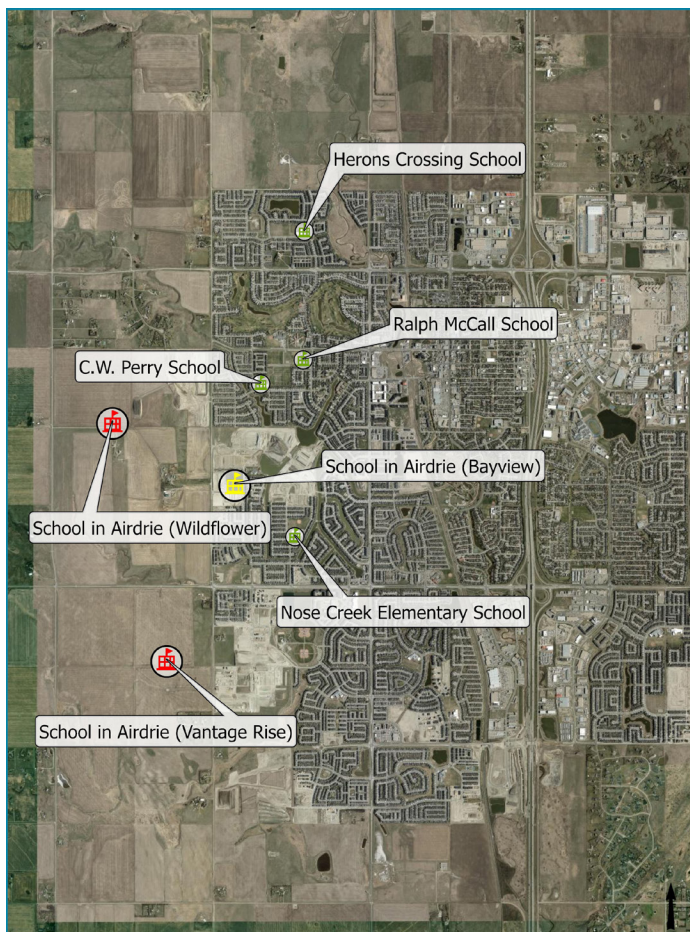
This new middle school would open with a projected enrolment of more than 550 students. Overall utilization in 2030 for schools in this part of Airdrie would be 91 per cent. In five years, the projected enrolment at the new school would be more than 700 students in 2036. RVS will consider additional boundary options prior to the opening of this school. An ideal utilization of 85 per cent across the existing five schools would result in the new school with an opening capacity of more than 1,200 students, approximately 118 per cent utilized which is not feasible. Focusing on attaining 95 per cent capacity in the existing area middle schools results in the new middle school opening with more than 780 students at 75 per cent utilization.

New School Information

Impacted Schools

Airdrie Northwest Schools

**Increase in capacity with Bayview K – 9 opening in September 2028.



Need

If the school is approved for construction funding, the soonest opening date would be 2033. RVS has begun communicating with the developer of Wildflower/Vantage Rise regarding timelines, sizing and site readiness.

This new Airdrie school would result in 5,077 total spaces available for students within this area, bringing an approximate utilization rate down to 90 per cent for 2033. With a projected enrolment in this area of 4,555 students for 2033, this new school is critical for RVS' continued delivery of a quality learning experience. Without support for this school, RVS is expecting occupancy to reach 109 per cent for these schools.

Challenge

Planning for a new school has the advantage of reducing capacity at four schools across Airdrie while providing space for the rapidly growing surrounding communities. School space options are becoming increasingly challenging as this area of Airdrie continues to develop. There is no opportunity to bus students across the highway to Meadowbrook School with that school's enrolment growing to 114 per cent by 2029 nor are there other school options with capacity.

Herons Crossing School, C.W. Perry School and Nose Creek Elementary School have no additional capacity for modular units and the new school in Bayview is being designed for full build-out. The November 2024 modular classroom request was submitted with a request for two more units at Ralph McCall School, maximizing the remaining capacity.

Solution

This new K – 9 school would open with a projected enrolment of more than 500 students with the other area schools nearing 100 per cent utilization. By 2038, the projected enrolment at the new school would be more than 725 students. RVS will consider additional boundary options prior to the opening of this school. An ideal utilization of 85 per cent across the five schools would provide the new school with an opening capacity of more than 1,000 students, approximately 112 per cent utilized, growing to more than 1,200 students in the same five-year span. With 93 per cent utilization at the other schools, this new school would see more than 675 students on opening day at 75 per cent utilization.

Cochrane At-a-Glance

Cochrane’s space for students challenges are similar to Airdrie’s. From 2019 to 2024, RVS’ student population in Cochrane increased by more than 1,000 students. RVS’ Cochrane student population in 2019 was 5,013 with a 79 per cent utilization rate. In September 2024, this increased to an enrolment of 5,944 students at a 93 per cent utilization rate. RVS’ schools in Cochrane currently have combined space for 6,275 students. This will rise to 7,225 with the projected opening of the newly approved school in Rivercrest in 2028. There are 411 free student spaces for the 2025 school year. The remaining space will be filled as student enrolments increase along with ongoing community development and housing starts.

Due to the geography in Cochrane, all schools are affected by continued enrolment and population growth. With intersecting highways, the Bow River and varying elevations, the Town of Cochrane’s developments expand in ways that do not easily fit into a grid system or are dividable by quadrants as seen in other RVS municipalities. This makes boundary configurations and future space planning more challenging.

School buildings in Cochrane reflect this continued growth. RVS has nine schools in Cochrane, all containing modular units, with eight out of nine having ten or more units.

Student Enrolment and Projections

The table below outlines the 2024 RVS student population in Cochrane. RVS’ Cochrane student enrolments increase annually by approximately 3.9 per cent by grade.

2024 Cochrane RVS Student Population

Grade	K	1	2	3	4	5	6	7	8	9*	10*	11*	12*
Enrolment	403	492	478	551	557	533	553	541	553	513	491	517	478

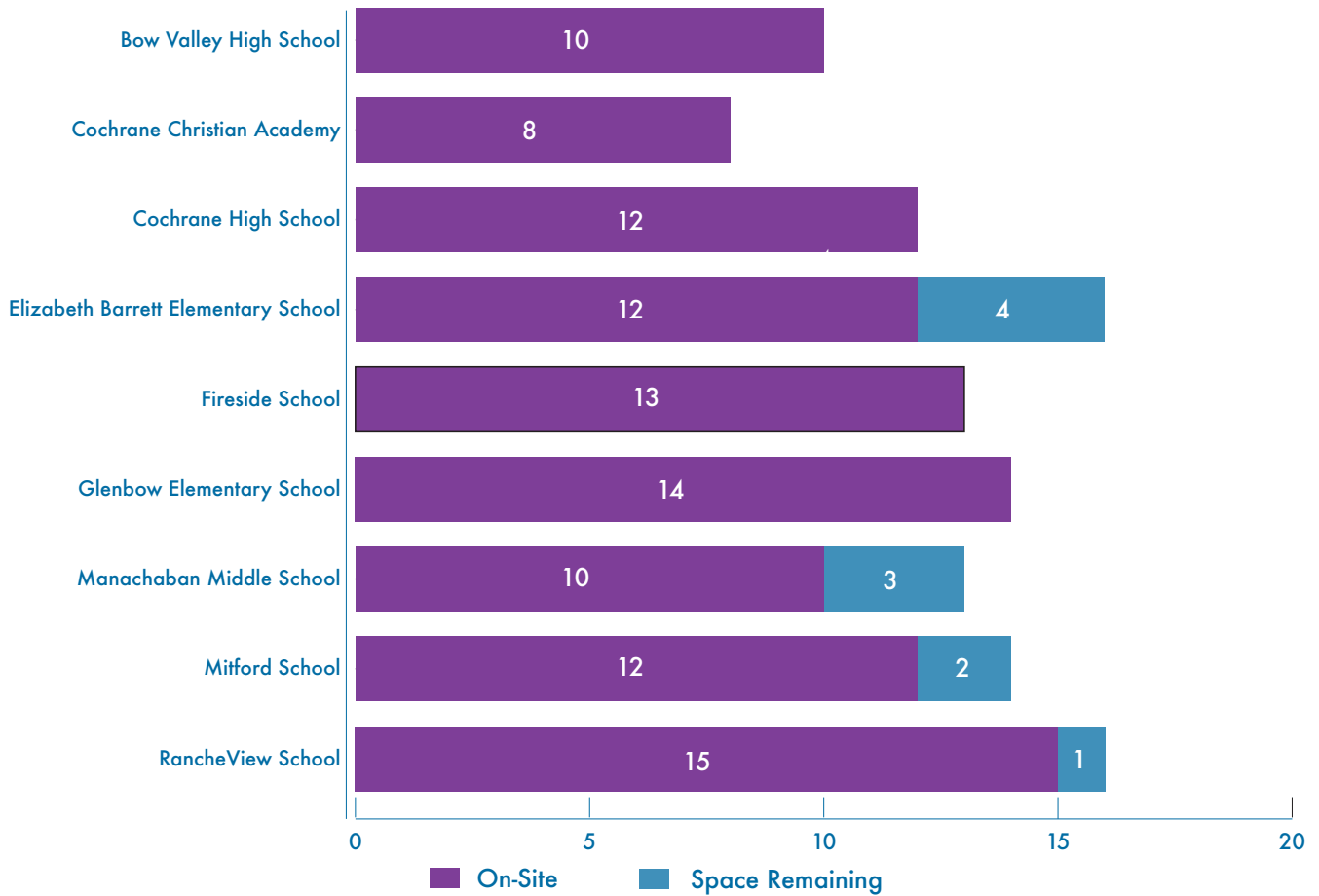
*High school grades (10 – 12) with Westbrook and Bearspaw feeding into Cochrane High School.
Cochrane area includes Westbrook and Bearspaw K – 8 schools.

There will be increased capacity of 500 student spaces* in September 2026 when the Bow Valley High School expansion is completed, increasing the capacity for Grades 9 – 12 at that school.

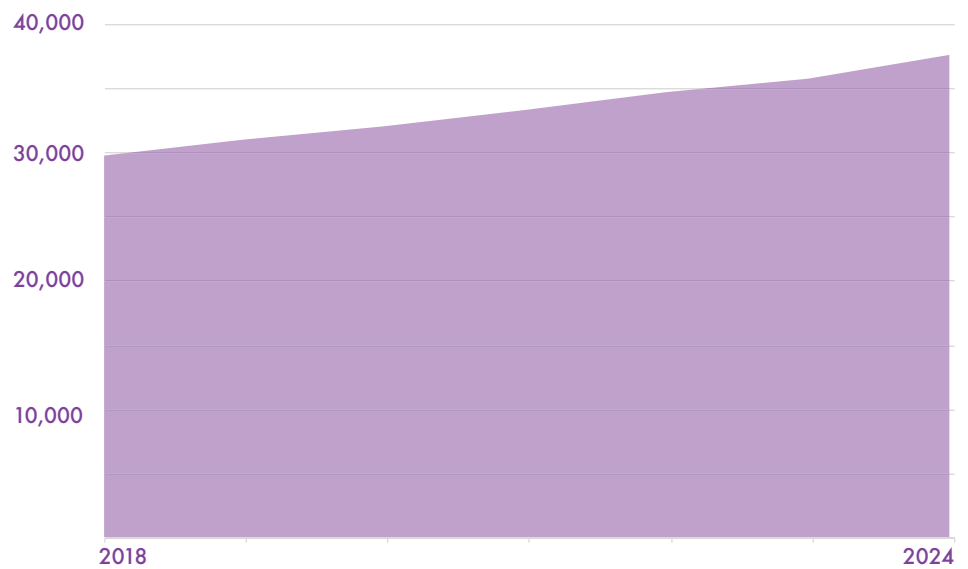
An RVS staff working group was assembled to discuss viable solutions to [balancing student enrolment](#) and providing relief in some of Cochrane’s most highly utilized schools. It is difficult to provide a long-term solution other than building more schools with so little capacity in Cochrane schools.

*300 new spaces because of the expansion plus 200 spaces in modular classrooms already on the site.

Current Cochrane Modular Unit Capacity



Cochrane's population has grown by 27 per cent since 2018, the last time a school opened in the community.



Priority 1: High School (Grades 9 – 12)

Horse Creek Sports Park, Cochrane

New School Information

Cochrane is planning a community recreation hub in Horse Creek Sports Park, one of the latest developments in the town. Horse Creek is directly north of Heritage Hills in the town's northwest. RVS and the Town have been in discussion since 2014, and most recently in spring of 2024, regarding the site of RVS' third high school in Cochrane. A portion of the Horse Creek development includes setting aside a 28.8-acre portion of the available quarter section for the high school.

This school site is along Horse Creek Road, also known as Range Road 44A, on the corner of Township Road 262. RVS is requesting a 1,525-capacity high school upon completion of construction. This would serve the needs of RVS' students in Cochrane by providing 25 classrooms, six CTF options, multiple science and lab offerings, as well as a strong sports presence with a 1,300+ square-meter gymnasium. Joint-use options would be abundant and would benefit the entire community.

With Bow Valley High School in the southwest and Cochrane High School to the east, this is the ideal location for a future high school.

Impacted Schools

Cochrane High Schools				
Year Actuals (A) Projected (P)	Bow Valley High School 9 – 12 Current Capacity 920 September 2026 Capacity 1,425	Cochrane High School 9 – 12 Current Capacity 1,060	Enrolment Capacity 1,980 September 2026 Enrolment Capacity 2,485	Approximate Utilization Rate
2021 (A)	828 (90%)	909 (91%)	1,737	88%
2022 (A)	901 (98%)	1,111 (112%)	2,012	102%
2023 (A)	1,004 (109%)	1,006 (101%)	2,010	102%
2024 (A)	983 (107%)	1,016 (96%)	1,999	101%
2025 (A)	987 (107%)	975 (92%)	1,962	99%
2026 (P)	1,047 (73%)	938 (88%)	1,985	80%
2027 (P)	1,127 (79%)	907 (86%)	2,304	93%
2028 (P)	1,276 (90%)	872 (82%)	2,148	86%
2029 (P)	1,401 (98%)	864 (82%)	2,265	91%

Need

If this new high school is approved, the soonest opening date would be 2031. A total of 4,010 student spaces would be available in Cochrane with the addition of this school and it would sustain the high school enrolments. With a projected enrolment in northwest Cochrane of 2,447 students for 2031, this new school is urgent for RVS' continued support of delivering a quality learning experience. Without this school, RVS is expecting utilization in Cochrane high schools to reach 99 per cent by 2031.



Challenge

Cochrane has two high schools: Cochrane High School, part of a tri-school site on the northeast side of the Bow River and Bow Valley High School on the south side. Both high schools reached maximum utilization in the 2022/23 school year and have been higher than 100 per cent every year.

The modernization and addition to Bow Valley High School, which commenced in June of 2024, is currently underway with an expected completion date in September 2026. The addition of two more modular classrooms to Cochrane High School under the government's modular classroom program, will benefit the division but also put the school at full build-out capacity.

Cochrane High School has had multiple small facility renovations and a major renovation spanning 2013 to 2015. RVS' Planning and Operations teams continue to explore creative solutions to address space challenges. This includes intensifying spaces such as the atrium, which doubles as the cafeteria and gathering hub for the school, the fitness room, administration spaces and reduction of the library space to repurpose into much-needed classroom space.

Even with the Bow Valley High School addition, growth is outpacing capacity in Cochrane. The addition and modular classrooms provide space for about 500 more students, but projected enrolments will exceed overall high school capacity once again by 2030.

The sustainable solution is to start the planning and subsequent design and construction tendering documents for a new high school in Cochrane as soon as possible, with construction funding coming within the next two years.

Solution


This new high school in Horse Creek would open with a projected enrolment of 357 students reducing utilization at the other area high schools to 85 per cent. In five years, the projected enrolment at the new school would be 462 students.

Priority 2: Kindergarten – Grade 8 School

Heartland, Cochrane

New School Information

Heartland is in the northwest of Cochrane with the neighbouring communities of Heritage Hills, West Terrace, West Valley and West Point. This eight-acre school site is on Heartland Way between Morgan Street and Saddlebred Link. RVS is requesting a 950-capacity elementary/middle school upon completion of construction providing future RVS students with an additional 25 classroom spaces, new ancillary space, a 940 square meter (about twice the area of a basketball court) gymnasium, construction rooms and a modern learning commons.



K – 8 enrolment in Cochrane schools has grown by 12.33 per cent since 2018, the last time a new school opened in the community.

The nearest schools are Glenbow Elementary School and Mitford School. By vehicle, Glenbow Elementary School and Mitford School are both approximately a 10-minute drive from Heartland. Walkability is not ideal due to the Canadian Pacific Railway line that runs through the Town of Cochrane. The average walk to Mitford School from Heartland is 30 minutes with an additional 15 minutes to Glenbow Elementary School.

As land continues to be developed and housing construction not showing any sign of slowing, the Heartland neighbourhood is just one of the five northwest communities with additional families seeking enrolment into RVS. With Glenbow Elementary School at 102 per cent utilization and the next nearest K – 4 school of Elizabeth Barrett Elementary School at 86 per cent utilization, RVS' school capacity is not keeping up with the growth.

- Three subdivisions remain in this area with Cochrane receiving final applications for development in 2024.
- Approximately 1,100 units have been built to date, of an anticipated 2,130 total units.
- Complete build-out is expected in the next two to three years.

Impacted Schools

Cochrane's growth is moving at a rapid rate. According to the Cochrane Growth Report, the Town is expecting a 3.9 per cent annual growth rate. This corresponds to an increase in student population that is faster than in Airdrie and Chestermere and more than 130 additional students per year.

With the addition of another K – 8 school in Cochrane's northwest, there would be fewer enrolment pressures seen across the entire north portion of the town and a significant improvement to the current situation in Heartland.

Select Cochrane Elementary and Middle Schools

Year Actual (A) Projected (P)	Elizabeth Barrett Elementary School Current Capacity 542	Glenbow Elementary School K – 4 Current Capacity 548	Manachaban Middle School 5 – 8 Current Capacity 560	Mitford School 5 – 8 Current Capacity 604	RancheView School K – 8 Current Capacity 857	Enrolment Capacity 3,111	Approximate Utilization Average Rate
2021 (A)	461 (77%)	494 (83%)	554 (99%)	274 (42%)	788 (86%)	2,571	83%
2022 (A)	479 (83%)	515 (88%)	559 (100%)	319 (53%)	646 (71%)	2,518	81%
2023 (A)	465 (79%)	556 (94%)	537 (96%)	355 (59%)	657 (73%)	2,570	83%
2024 (A)	472 (80%)	546 (94%)	518 (93%)	410 (68%)	688 (77%)	2,634	85%
2025 (A)	481 (82%)	545 (92%)	500 (89%)	471 (78%)	682 (76%)	2,679	86%
2026 (P)	451 (76%)	514 (87%)	522 (93%)	499 (83%)	698 (78%)	2,684	86%
2027 (P)	451 (76%)	487 (82%)	531 (95%)	523 (87%)	695 (77%)	2,687	86%
2028 (P)	454 (77%)	462 (78%)	535 (96%)	512 (85%)	686 (76%)	2,649	85%
2029 (P)	449 (76%)	428 (72%)	526 (94%)	527 (87%)	675 (75%)	2,605	84%
Calculations are made with Kindergarten considered a full-time equivalent (FTE).							



Need

If the school is approved, the soonest opening date would be 2031. The addition of this new school would result in 4,061 student spaces being available in northwest Cochrane for K – 8 students and reduce the approximate utilization rate to 70 per cent. With a projected enrolment in this area of 2,813 students for 2031, this new school is necessary for RVS' continued delivery of a quality learning experience. Without this school, RVS is expecting occupancy to reach 90 per cent in 2031. This assumption has been made with RVS' awarded school in Rivercrest being fully constructed and open by September 2028.

Challenge

Grades 1 – 5 in Cochrane currently have on average 35 more students per grade than seen in Grades 6 – 12. Therefore, the availability to provide enrolment options at Kindergarten, Grade 1 and Grade 2 for young families and new residents to the community is compromised.

Glenbow Elementary School had a major modernization in 2010 to ensure functional spaces were present throughout the school and another minor renovation in 2013 which further expanded the school's spaces resulting in best

utilization. Elizabeth Barrett Elementary School has seen the addition of modular classrooms in 2005, 2007 and 2014 with room for four more – approximately 100 students. This leaves RancheView School as an option with room for one additional unit. Fireside School, located in the southwest, opened well over capacity in 2018. RancheView School, in the northeast, opened in 2016.

RVS will experience increasing enrolments coming from the developing Heartland community soon. These students are currently designated for Glenbow Elementary School, which does not have any more modular capacity, nor is there ample space on site for an addition. Elizabeth Barrett Elementary School has some capacity while RVS monitors the situation.

Solution

This new K – 8 school in Heartland would open with a projected enrolment of more than 325 students resulting in the other area schools having an 85 per cent utilization rate. By 2036, the projected enrolment at the new school would be more than 400 students.

Chestermere At-a-Glance

Chestermere Lake divides the east and west portions of Chestermere and Highway 1 skirts around the north and through the east side. Development is currently mainly expanding in the west, with a substantial portion in all directions recently being annexed. The current boundary configurations are resulting in extended commute times and longer busing routes to address nearby schools’ availability.

An RVS staff working group analyzed practical solutions to balancing student enrolment and providing relief in some of Chestermere’s most over-utilized schools. Like Airdrie and Cochrane, this is a significant challenge with such little capacity. Following a [public engagement](#), the Board of Trustees made the decision to adjust attendance boundaries and grade configurations to help address space challenges. While these changes provide some short-term relief, new schools are needed as the sustainable solution.

Key changes in the 2025 student accommodation plan include:

- a grade configuration change for East Lake School, and
- attendance boundary changes for several communities.

These changes will help balance student enrolments across schools, create a second middle school option for students in Grades 7 – 9 and allow more students to attend a school closer to where they live.

Student Enrolment and Projections

In 2024, there were almost 4,000 students enrolled in RVS within the Chestermere boundary. Although recent changes have significantly helped, the utilization rate remains high at 98 per cent. Projections for 2030 show an additional 700 students in Chestermere. Even if the new Dawsons Landing school is completed on time, the overall utilization rate would still be 90 per cent.

The areas of growth in Chestermere’s west side of the city are resulting in the nearby RVS schools becoming too full. Students residing in the growth areas are bused to East Lake School, which is expected to be 115 per cent utilized in September 2027. In 2024, 338 new students joined RVS schools from the developing communities of Dawsons Landing, Chelsea, South Point and Waterford. Along with other developing communities such as Kinniburgh, Bridgeport and Clearwater Park, structure plans indicate there will be more than 7,000 new RVS students from these developing areas when completed, almost doubling the total number of enrolments this year.

The table below is the 2024 RVS student population in Chestermere. RVS’ Chestermere student enrolments increase annually by approximately 2.16 per cent by grade.

2024 Chestermere RVS Student Population

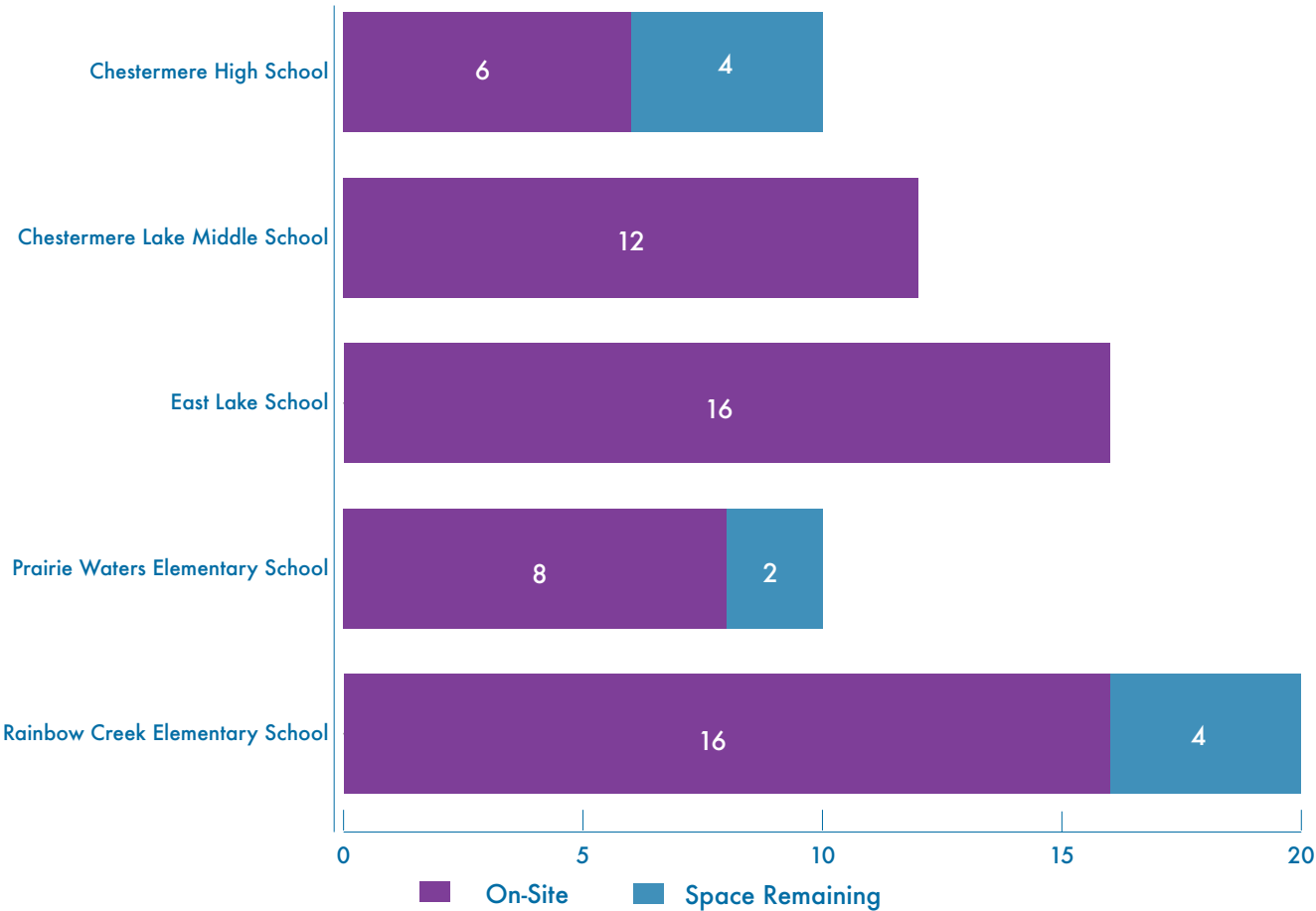
Grade	K	1	2	3	4	5	6	7	8	9	10*	11*	12*
Enrolment	225	297	300	318	282	311	314	331	304	298	295	291	362

*The decrease in high school enrolment reflects the opening of Horseshoe Crossing High School in Langdon in 2024.

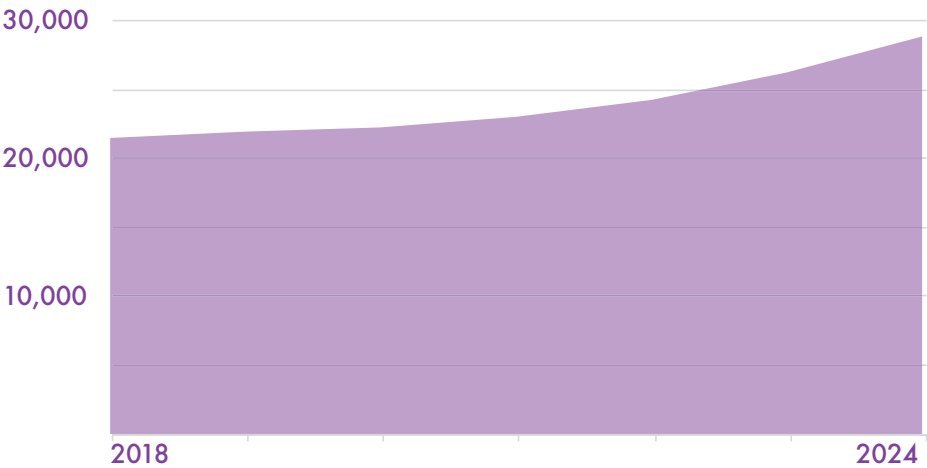
As of March 2025, the remaining modular space in Chestermere would allow for 10 more modular units, adding 250 student spaces spread over three schools. This relief will not satisfy the projected growth and is insignificant toward any long-term solution.

All the elementary schools and one middle school in Chestermere have a high number of modular classrooms attached or freestanding. While this has helped provide temporary classroom space, it also strains the core school facilities including CTF spaces, gyms and corridors. New schools in Chestermere are needed immediately as the city continues to grow.

Current Chestermere Modular Unit Capacity



Chestermere's population has increased by 34 per cent since 2018.



Priority 4: Kindergarten – Grade 9 School


Clearwater Park, Chestermere

New School Information

Proposed for Clearwater Park in Chestermere, this new school site is planned for phase four in the neighbourhood development plan. A 4.5-acre building envelope is allotted with 6.85 acres set aside for playfields. This school site is east of Highway 1 and fronts onto Chestermere Boulevard. In 2023, the developer brought utility services over to the east side of the highway as part of phase one development, important when considering the readiness of the site.

RVS requests an 815-capacity K – 9 school, providing another school site on the east side and mitigating the K – 9 strains in the rest of the city. Upon completion of construction, RVS will have a school that adds twenty-one core classrooms, four dedicated science centres, a CTF classroom, five ancillary spaces, a gymnasium and modern learning commons.

When Clearwater Park Stage one is completed, there is an expectation for 700 K – 9 RVS enrolments. These 700 additional students will be accompanied by more from neighbouring communities as the forecasted population increases to over 56,000 residents within the boundary of Chestermere. Rural students attending East Lake School could be reallocated to Clearwater Park, mitigating the pressures on this existing school.



**The number of
K – 9 RVS students
in Chestermere has
increased by 12 per
cent since 2018.**

Impacted Schools

Chestermere's elementary schools and the single middle school are all facing enrolment pressure. There are some alarming rates to consider:

- East Lake School is over capacity with a 113 per cent utilization rate in 2024.
- Rainbow Creek Elementary School is projected to be at 99 per cent utilization in September 2025.
- Chestermere Lake Middle School's utilization reached 100 per cent in September 2024.

Despite a recently approved student accommodation plan to manage current overcrowding challenges, increasing population requires the addition of two more K – 9 schools by 2032 as the only sustainable solution.

Chestermere Elementary and Middle Schools

Year Actuals (A) Projected (P)	Chestermere Lake Middle School 7 – 9 Current Capacity 934	*East Lake Middle School K – 9 Current Capacity 827	Prairie Waters Elementary School K – 6 Current Capacity 624	Rainbow Creek Elementary School K – 6 Current Capacity 731	Enrolment Capacity 3,116	Approximate Utilization Rate
2021 (A)	870 (107%)	841 (97%)	573 (85%)	533 (80%)	2,817	90%
2022 (A)	875 (96%)	804 (92%)	619 (94%)	538 (80%)	2,836	91%
2023 (A)	884 (97%)	879 (100%)	617 (93%)	520 (78%)	2,900	93%
2024 (A)	933 (100%)	985 (113%)	584 (88%)	498 (75%)	3,000	96%
2025 (A)	757 (81%)	956 (111%)	569 (86%)	755 (99%)	3,037	98%
2026 (P)	744 (80%)	995 (115%)	585 (88%)	729 (96%)	3,053	98%
2027 (P)	723 (77%)	997 (115%)	602 (91%)	753 (98%)	3,075	99%
2028 (P)	783 (84%)	963 (111%)	632 (95%)	763 (99%)	3,141	101%
2029 (P)	834 (89%)	943 (109%)	666 (100%)	768 (99%)	3,211	103%

* Grade configuration changed in 2025.

Calculations are made with Kindergarten considered a full-time equivalent (FTE).



Need

If the school is approved, the soonest opening date would be 2032. This new Chestermere school, along with the assumed addition of the school in Dawson's Landing in 2028, would result in 5,920 total student spaces for K – 9 students in Chestermere and could reduce the approximate overall utilization rate of all K – 9 schools in the city to 77 per cent. This new school is urgent for RVS' continued delivery of quality learning experience. Without this school, RVS is expecting utilization to reach 94 per cent by 2032, assuming the K – 9 school in Dawson's Landing opens in 2028.

Challenge

RVS staff continuously discuss possible solutions to balance student enrolment and provide relief in some of Chestermere's most utilized schools. It is difficult to provide a long-term solution with so little capacity in these schools. RVS will continue to communicate and monitor the current situation surrounding any future announcement for the priority six school in Chelsea. Following a successful approval of the K – 9 school in Dawson's Landing, RVS can then explore short-term strategies to mitigate continued city-wide growth.

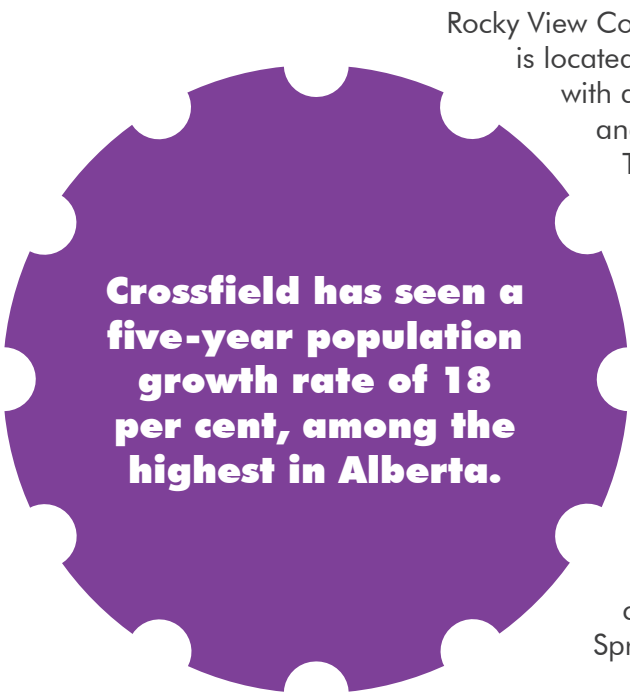
Solution

The request to construct a K – 9 school within the neighbourhood of Clearwater Park aligns with RVS' long-term planning. In five years, the projected enrolment at the new school would be more than 700 students and an approximate utilization rate of 82 per cent in 2035.

Rural Areas At-a-Glance

The two rural areas within Rocky View Schools 2026 – 2029 Capital Plan include Crossfield in the north portion of RVS’ division boundary and Springbank, encompassing a substantial portion of the division’s west boundary.

Crossfield has gone from a population of 3,397 in 2020 to 3,996 residents in 2024 and is the tenth fastest growing municipality in the province with a 18 per cent increase in the last five years. This is partially due to Crossfield being within the Calgary – Edmonton Corridor zone.



Rocky View County has many developments planned for Springbank, which is located to the west of Calgary. Harmony is one of the largest hamlets with a proposal for 3,500 residential homes. Rivers Edge, The Acres and Pradera Springs are expected to add another 200 homes. There is a large Springbank Area Structure Plan involving the combining of north, south and central area structure plans, creating half-acre lots via Rocky View County’s Open Space Residential plan. Based on resident feedback, the build-out population has been set to 17,000 people.

Harmony, on the north side of Highway 1, is a new 1,750-acre community development. The population of Harmony is projected to be more than 10,000 people. Current developments have slowed in Harmony due to a variety of conditions. RVS will continue to monitor the situation and plan accordingly. Current enrolments, specifically from the Harmony community, include more than 300 students, covering all grades offered in RVS, attending the three Springbank schools.

Student Enrolment and Projections

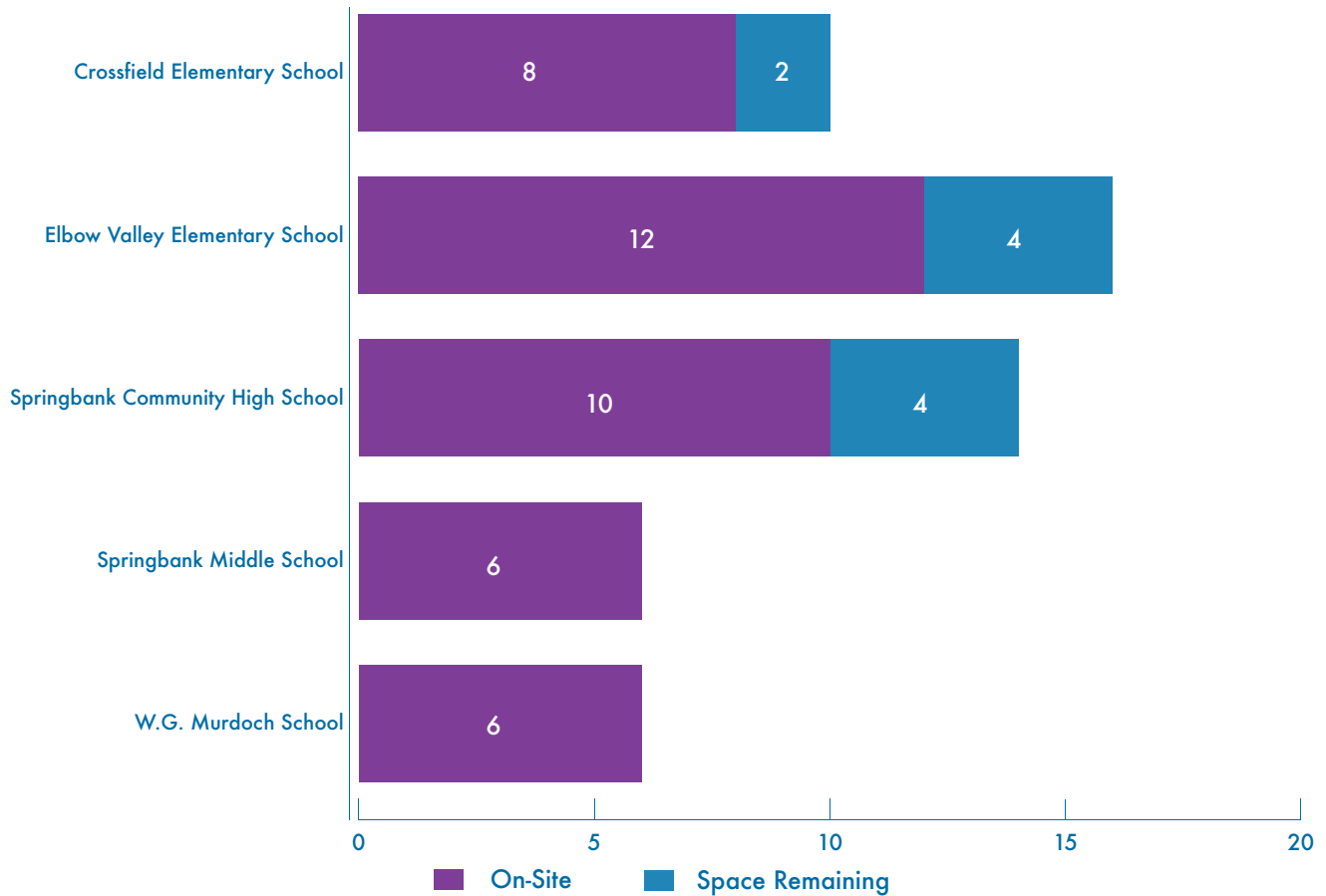
The table below is the 2024 RVS student population in the rural area.

2024 Rural RVS Student Population

Grade	K	1	2	3	4	5	6	7	8	9	10	11	12
Enrolment	264	308	322	384	337	355	382	397	397	366	379	343	291

*Schools included in the calculations are Elbow Valley Elementary School, Springbank Middle School, Springbank Community High School, Banded Peak School, Sarah Thompson School, Langdon School, Horseshoe Crossing High School, Indus School, Crossfield Elementary School, W.G. Murdoch School, Kathyryn School and Beiseker Community School.

Current Rocky View County Modular Unit Capacity



As of March 2025, RVS will only have space for eight modular units throughout the Springbank school sites. These additional 200 student spaces will not satisfy the projected growth and are insignificant toward any long-term solution. Crossfield has the same projected concern, with a maximum of 50 more students allotted for all the school sites.

All the rural schools on the priority list have a high number of modular classrooms attached or freestanding. While this has helped provide temporary classroom space, it also strains the core school facilities including CTF spaces, gyms and corridors. New schools are needed as these communities continue to grow.

Priority 5: Kindergarten – Grade 8 School

Vista Crossing, Crossfield

New School Information

Vista Crossing in Crossfield is a new community 20 minutes north of Airdrie. RVS has a 5.25-acre building envelope within the total 8.3-acre school site dedicated to the division, located on Ellen Way and Vista Drive just north of Township Road 285, and east of Range Road 12 on Crossfield's west side. RVS is requesting a 680-capacity K – 8 school upon completion of construction to serve the community's needs. The build-out would provide RVS with 16 classrooms, two dedicated science rooms, ancillary spaces, additional programming for a CTF class, a gymnasium and a learning commons space.

The town's only schools, Crossfield Elementary School (K – 5) and W.G. Murdoch School (Grades 6 – 12) are approximately four minutes away by vehicle to the east and an approximate 18-minute walk from Vista Crossing. Surrounding neighbourhoods which are also in various stages of development include Sunset Ridge, Iron Landing and Hawks Landing. When these communities are completed, the combined enrolment increase is expected to be more than 1,000 students.

Vista Crossing, where the school site is located, is a 155-acre development with an anticipated population of 2,300 people residing in 820 residential dwellings. Of these new families, RVS is expecting to see an eventual influx of more than 420 students from Vista Crossing alone.

Impacted Schools

Crossfield Schools				
Year Actuals (A) Projected (P)	Crossfield Elementary School K – 5 Current Capacity 367	W.G. Murdoch School 6 – 12 Current Capacity 472	Enrolment Capacity 839	Approximate Utilization Average Rate
2021 (A)	303 (75%)	364 (88%)	667	80%
2022 (A)	304 (77%)	399 (96%)	703	84%
2023 (A)	322 (82%)	389 (94%)	711	85%
2024 (A)	307 (77%)	418 (101%)	725	86%
2025 (A)	326 (82%)	398 (84%)	724	86%
2026 (P)	328 (83%)	397 (84%)	725	86%
2027 (P)	333 (84%)	405 (86%)	738	88%
2028 (P)	337 (85%)	401 (85%)	738	88%
2029 (P)	345 (87%)	397 (84%)	742	88%
Calculations are made with Kindergarten considered a full-time equivalent (FTE).				

A new K – 8 school in the growing community of Vista Crossing will help to accommodate current and future student enrolment in the rural area. Without the school, RVS is projecting an overall 85 per cent utilization rate in Crossfield by 2027. By 2030, the earliest this school is expected to open, Crossfield’s RVS schools will be at least 88 per cent utilized.

With the addition of another school in Crossfield, a balance of available space can occur and additional programming can support future students. RVS staff will continue to employ innovative student accommodation planning methods to ensure the community’s schools are maximizing their potential.



Need

With an award of design funding in the 2026 budget year, and timely construction approval, RVS is projecting an opening date of September 2031. This new Crossfield school would result in 1,519 total spaces available for K – 8 students and reduce the approximate utilization rate for K – 8 schools in Crossfield to 52 per cent. With a projected enrolment in this area of 768 students for 2031, this new school is an important part of RVS’ long-term plan to ensure student spaces keep pace with ongoing enrolment growth. Without this school, RVS would likely develop the last two available modular spaces. RVS is expecting Crossfield Elementary School to reach 87 per cent utilization by 2029.

Challenge

As the neighbourhoods and surrounding communities develop, especially with the municipal infrastructure enhancement plans, the school catchment areas would need to accept all new registrations from these newly developed neighbourhoods, while keeping a balance at the existing two schools.

When strategizing multiple solutions, RVS considers the uniqueness of each community to determine changes that will best serve those students and their families. In the Crossfield area, the current grade structure is working well for families, students and RVS staff, and the desire is to maintain that structure. Additionally, due to Crossfield’s close-knit community and easy accessibility, RVS will look further into shared-use spaces between all three schools and explore strategies for community use.

With two schools in Crossfield, one surpassing 100 per cent utilization in 2024, RVS sets this as Priority 5. Crossfield Elementary School and W.G. Murdoch School’s additional modular capacity will only assist in short-term planning until an award for new construction is granted. W.G. Murdoch School went through a modernization in 2016 and Crossfield Elementary School had a facility review in 2020 to ensure all students were learning in the best possible environment.

Solution

This new Kindergarten – Grade 8 school in Vista Crossing would open with a projected enrolment of more than 300 students with the other two schools at 85 per cent capacity. By 2037, the projected enrolment at the new school would be more than 350 students.

Priority 7: Middle School (Grades 5 – 8)

Springbank, Rocky View County

School Modernization and Addition Information

RVS is requesting a modernization and addition to Springbank Middle School which would add 280 permanent spaces onto the existing facility. This addition would consist of five core classrooms, ancillary space, another CTF space, an allowance for increased circulation, along with a larger gymnasium to better align with current Capital Manual building standards and similar schools of this enrolment. RVS has 3,875 square meters available on-site and proposes to use about 2,500 square meters of the available site space.

Upon further review of RVS’ 2024-2027 Capital Plan and monitoring the current growth patterns in the west portion of RVS division boundaries, it was determined a full-scale new school build in the Harmony community was not yet necessary. This alternate approach is being presented in the 2026 – 2029 Capital Plan for consideration and future-proofing divisional growth.

Impacted Schools

RVS has three schools that accommodate students in the Springbank area: Elbow Valley Elementary School, Springbank Middle School and Springbank Community High School. This addition directly benefits the students in the current catchment area as Springbank Middle School has the smallest occupancy of the three schools. Regardless of the continued development of Harmony, students leaving Elbow Valley will continue to enter a middle school that, in 2024, was at almost 100 per cent utilization. Springbank Middle School continues to be overcrowded based on the original design capacity.

Springbank Schools					
Year Actuals (A) Projected (P)	Elbow Valley Elementary School K – 4 Current Capacity 706	Springbank Middle School 5 – 8 Current Capacity 621	Springbank Community High School 9 – 12 Current Capacity 918	Enrolment Capacity 2,245	Approximate Utilization Rate
2021 (A)	506 (66%)	537 (94%)	727 (79%)	1,770	79%
2022 (A)	517 (68%)	576 (101%)	715 (78%)	1,808	81%
2023 (A)	530 (69%)	556 (97%)	727 (79%)	1,821	81%
2024 (A)	549 (72%)	552 (97%)	692 (75%)	1,793	80%
2025 (A)	543 (72%)	538 (87%)	670 (73%)	1,751	78%
2026 (P)	506 (67%)	543 (87%)	696 (76%)	1,745	77%
2027 (P)	492 (65%)	558 (90%)	676 (74%)	1,726	77%
2028 (P)	459 (61%)	590 (95%)	673 (73%)	1,722	77%
2029 (P)	438 (58%)	587 (95%)	681 (74%)	1,706	76%
Calculations are made with Kindergarten considered a full-time equivalent (FTE).					



Need

If this addition and modernization request is approved, the soonest opening date would be 2029 – 2030. The new addition would result in 901 total spaces available at the middle school and reduce the overall approximate utilization rate to 60 per cent when it opens. With a projected enrolment in this area of 541 students for 2030, this addition is critical for RVS' continued delivery of a quality learning experience. Without this school, RVS is expecting Springbank Middle School's occupancy to reach 87 per cent by 2026.

Challenge

One strategy RVS considered was to reconfigure the grade structure of the three schools in Springbank. This would increase Elbow Valley Elementary School's K – 4 grade structure to include Grade 5 and decrease Springbank Middle School from Grades 5 – 8 to Grades 6 – 8. Between English and French Immersion, approximately 145 Grade 5 students would be added to Elbow Valley Elementary School.

One of the reasons this inquiry was not feasible is due to the age and function of the existing space. The small school was

constructed in 1971 and has smaller classrooms, some of which are only 64 square meters. The absence of suitable spaces for CTF or ancillary spaces, requires RVS use a modular classroom for these optional classes.

RVS chose not to pursue this option because this only pushes the enrolment pressures at Springbank Middle School to another school.

When strategizing about solutions, RVS considers the uniqueness of each community to determine changes that will best serve those students and their families. In the Springbank area, the current grade structure is working well for families, students and RVS staff and the desire is to maintain that structure.

With such a large boundary and nearby development, this addition will balance out student spaces between the three schools. Having space for 901 students at Springbank Middle School will allow for natural growth to continue and assists in bringing the school down to a reasonable and functional utilization level.

Springbank and Harmony's solutions for growth are to either add more modular classrooms to the existing three schools or add more permanent space. RVS does have space for two additional modular classrooms at Springbank Middle School; however, that only brings down the current utilization rate to 89 per cent. This utilization is projected to increase with further neighbouring growth. The modulators would also only contribute to classroom space and not consider the strain to the core school facilities including CTF spaces, gyms and corridors.

Due to the geography and location, relocating students north to Cochrane is not viable, nor does RVS have the space in Cochrane to accommodate these students. Banded Peak is even farther and would not be an ideal relocation site.

Solution

Upon completion of the addition, Springbank Middle School would have a projected enrolment of 633 students increasing to more than 650 students in 2035, an approximate utilization of 75 per cent.

2026 – 2029 CAPITAL PLAN



Rocky View Schools
2651 Chinook Winds Dr. S.W.
Airdrie, AB T4B 0B4