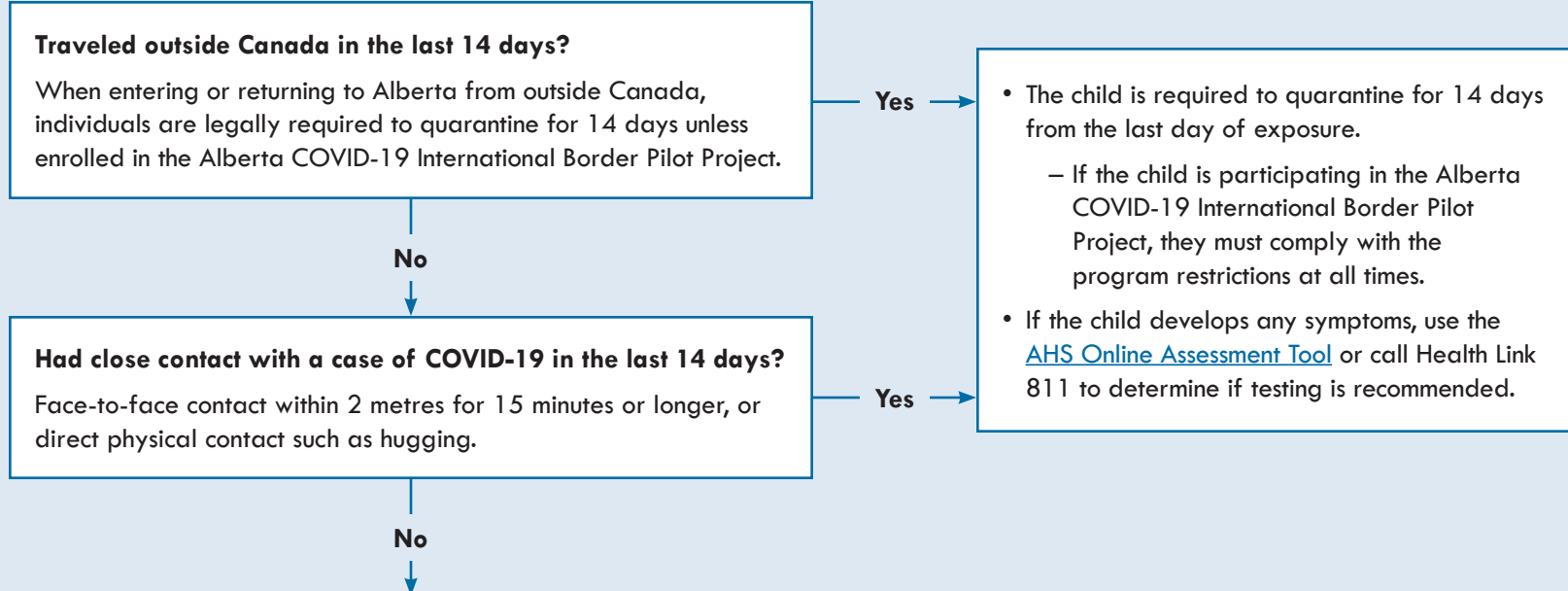


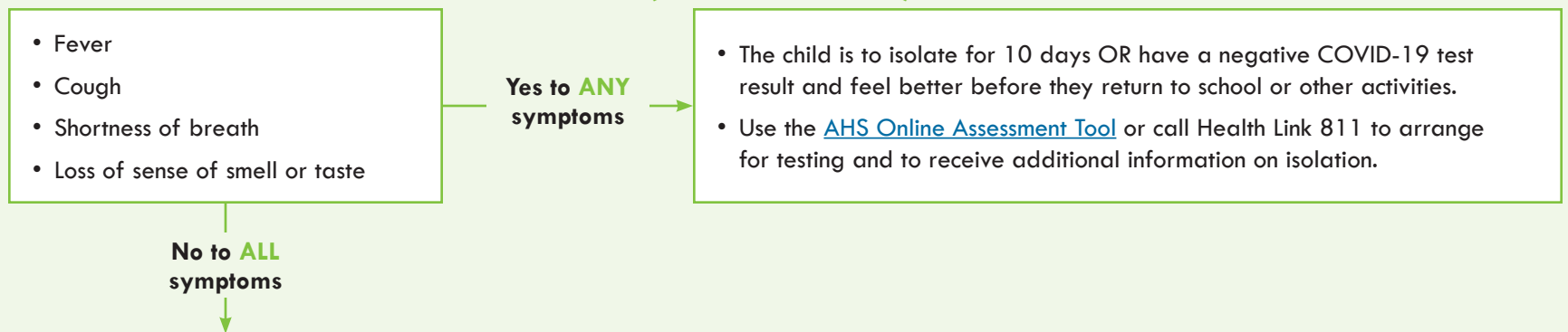
Should I go to school today?

To help keep everyone safe, RVS students are required to complete the [COVID-19 Alberta Health Daily Checklist](#) (for children under 18 or who are 18 and older in high school) to determine if they should attend school. This flowchart is a simplified version of the checklist.

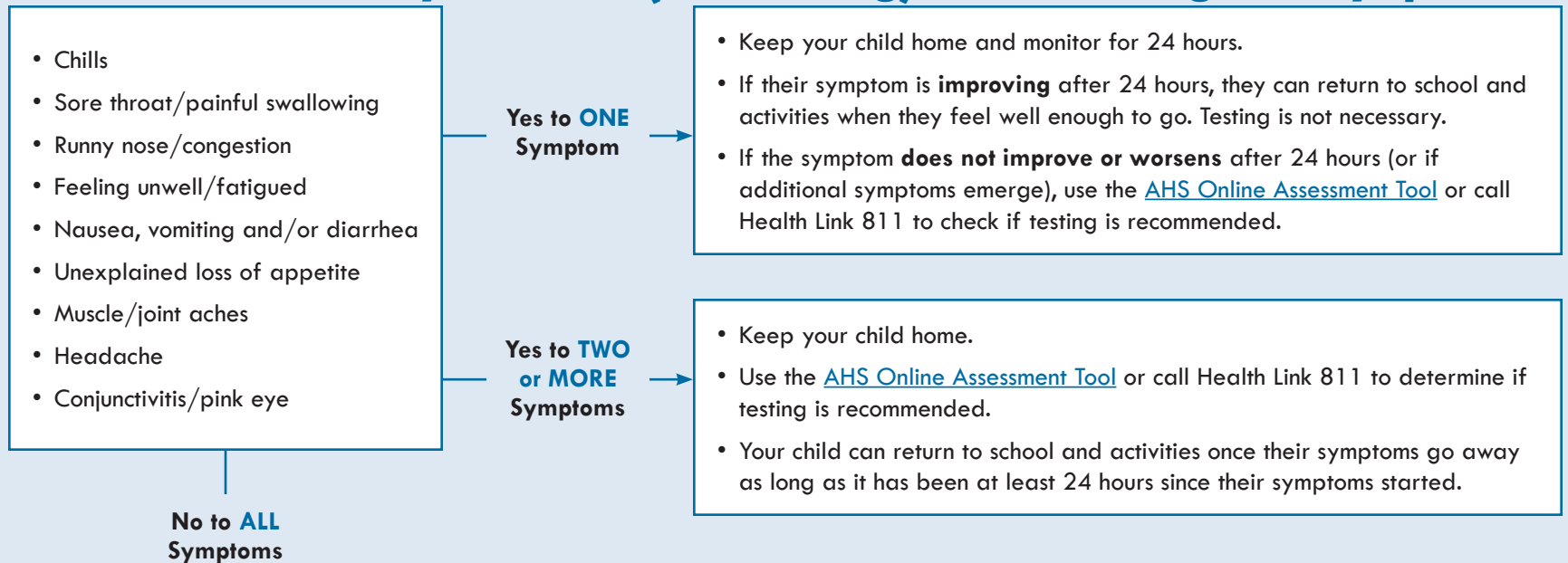
1 Has the child:



2 Does the child have any new onset (or worsening) of the following core symptoms:



3 Does the child have any new onset (or worsening) of the following other symptoms:



You can come to school!

Definitions/Notes:

Symptom definitions
please refer to the to [AHS Daily Checklist](#).

Individuals who have allergies or ongoing health issues must be tested at least once according to the [AHS Guidance document](#). This will establish a baseline for the individual. If symptoms change (worsen, additional symptom, change in baseline) the individual must stay at home and use the [COVID-19 Self-Assessment Tool](#) to determine whether they need to be tested for COVID-19.